

CERTIFICATE OF LOCATION OF GOVERNMENT CORNER

Southwest Corner of Section 18
Township 56 N, Range 13 W, 4th P.M.
STATE OF MINNESOTA, COUNTY OF ST. LOUIS.

Office of the County Recorder
St. Louis County, MINNESOTA

Recorded on: MAR 29 2018
at 03 38 p m
Document No. 1330202

Mark A. Monacelli
County Recorder

I hereby certify that the within instrument was filed in this office for record

by [Signature] Deputy
(reserved for recording data)

On May 10, 2016, found a(n): Aluminum Capped Pipe (ACP), set in 1975. ERRONEOUS MONUMENT

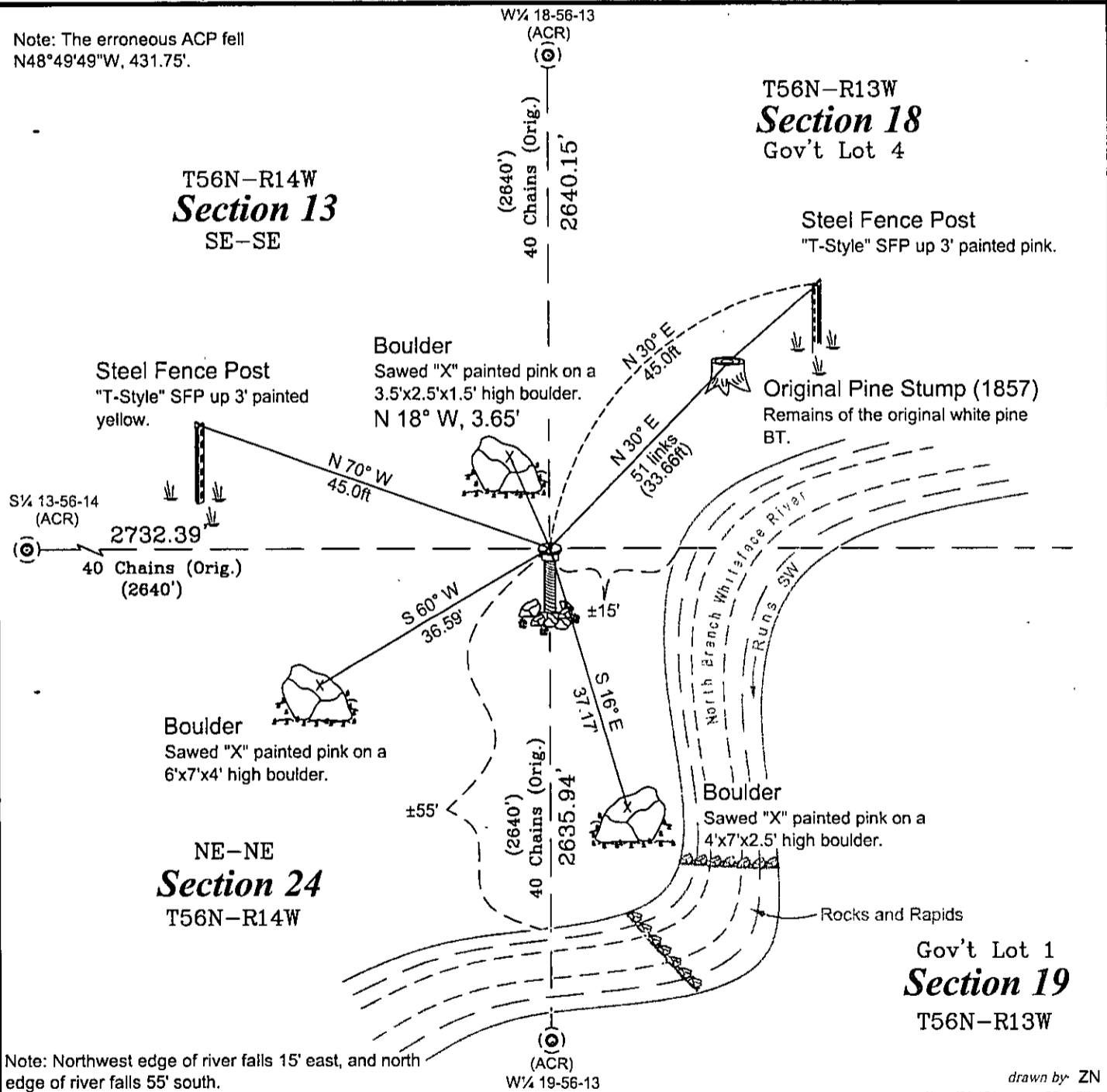
- left monument as found
- lowered monument
- removed monument (explain)
- raised monument

On May 17, 2016, set a(n): 5/8"x6' Aluminum Capped Rebar (ACR) up 1' in a mound of stone from an original pine stump.

See "Statement of Evidence" for further details (on back)

GPS I.D.: 15 Co. Proj. No.: 161477

Note: The erroneous ACP fell N48°49'49"W, 431.75'.



"SKETCH OF REFERENCE TIES"

(not to scale - bearings are magnetic)

Ties are measured to center of monument unless otherwise noted.

NAD 83 (1996 adjustment)

Latitude (N): 47°19'42.03695"

Longitude (W): 92°02'51.65918"

Northing: 3540673.617ft

Easting: 4856985.117ft

SLCTM 96

I hereby certify that this survey, plan, or report was prepared by me or under my direct supervision and that I am a duly Licensed Land Surveyor under the laws of the state of Minnesota. I further certify that this certificate of location of government corner is correct and complete to the best of my knowledge and belief.

[Signature]
Signature

Preston Dowell

3-27-18
date

License No. 44976

County Surveyor

Deputy County Surveyor

Professional Land Surveyor

Statement of Evidence**Southwest Corner, Section 18, T56N, R13W**

August 11, 1857-October 16, 1857: The original survey of the Rangeline between R13W & R14W, T56N was run north between Sections 19 and 24 and at 80.00 chains set a post for the section corner from which:

28" White Pine	N 30 E	51 links
7" Spruce	N 28 W	30 links
5" Fir	S 72 W	30 links
3" Tamarack	S 89 E	no distance given

Other calls: running north between Sec's 19 & 24 at 78.16 chains (121' south) "a stream 60 links wide rapid runs SW".

Running north between Sec's 18 & 13 at 8.00 chains (528' north) leave swamp NE-SW; at 31.80 chains (2099' north) a 20" white pine line tree; At 37.50 chains (2475' north) enter swamp NE-SW.

George E. Adair, U.S. Deputy Surveyor

September, 1870: The subdivision of T56N-R14W was run with the SW 18-56-13 tied into with distance of 40.00 chs to the S $\frac{1}{4}$ 13-56-14.

December, 1870: The subdivision of T56N-R13W was run with the SW 18-56-13 tied into with a distance of 42.10 chs (82.10 ch. mile) to the S $\frac{1}{4}$ 18.

Butler & Hiram Comstock, U.S. Deputy Surveyors

August 19, 1975: Erroneous Monument Position

Notes indicate setting an aluminum capped pipe (ACP) by chaining east from the SW 13-56-14 a distance of 5280'. The corner is noted as being 375' north of river, run on a 3° variance.

BT's:

4" Spruce	S 45 E	19.9'	scribed, painted & tagged
3" Spruce	S 50 W	22.4'	scribed, painted & tagged
Boulder	NE Quadrant	6.9'	"+" on 5'x3'x1.5' high rock.

Al Bakk - St. Louis County Field Book #151, page 10
and old St. Louis County corner card

November 26, 1975: Erroneous Monument Position

Corner Certificate Document #224832 was filed stating the corner was set from measurements to the north, south, east and west. Also contains ties from the above August 19, 1975 information.

Norm Livgard, RLS #10725
St. Louis County Surveyor

May 10, 2016: A search area was computed based on a prorated distance between the two township corners along the range line between T56NR14W and T56NR13W. This point fit well with feature calls all along the range line. A 29" white pine stump was found that was determined to be the original BT. A position was marked to conform to this BT, then measurements were taken to local feature calls:

-the stream call to the south (78.16 chains) matched well, we measured 120'. Also noted a small rapids near the intersection of the range line and the stream.

-a pine stump called out as a line tree in the original notes at 31.80 chains to the north was found and matched well, we measured 2124'.

-a "leave swamp" call to the north (8 chains) matches well, we measured 522'.

-an "enter swamp" call to the north (37.50 chains) matches well, we measured 2462'.

A 5/8" X 6' aluminum capped rebar (ACR) was set S 30 W, 51 links (33.66') from the found 29" white pine stump (orig. BT) and was located with GPS/VRS Point #15 (Camp 26 job).

The 1975 ACP was located as Point #214 and fell N48°49'49"W, 431.75'. It was then removed.

May 17, 2016: Returned to set ties:

Sawed "+"	S 16 E	37.17'	4'X7'X2.5' high boulder
Sawed "+"	S 60 W	36.59'	6'X7'X4' high boulder
Sawed "+"	N 18 W	3.65'	3.5'X2.5'X1.5' high boulder
Steel Fence Post	N 30 E	45.0'	"T" style, 3' up
Steel Fence Post	N 70 W	45.0'	"T" style, 3' up

NW edge of river falls 15' east, north edge of river falls 55' south.

Gerry Bahar and Zach Neunsinger
Preston Dowell, Deputy County Surveyor
St. Louis County Public Works Dept./ Land Survey Division

CERTIFICATE OF LOCATION OF GOVERNMENT CORNER

Southwest Corner of Section **16**
Township **62 N**, Range **20 W**, 4th P.M.
STATE OF MINNESOTA, COUNTY OF ST. LOUIS.

Office of the County Recorder
St. Louis County, MINNESOTA

Recorded on: AUG 17 2017

at 11 42 P m

Document No 1315717

Mark A. Monacelli
County Recorder

I hereby certify that the within instrument
was filed in this office for record

by [Signature]
(reserved for recording data) Deputy

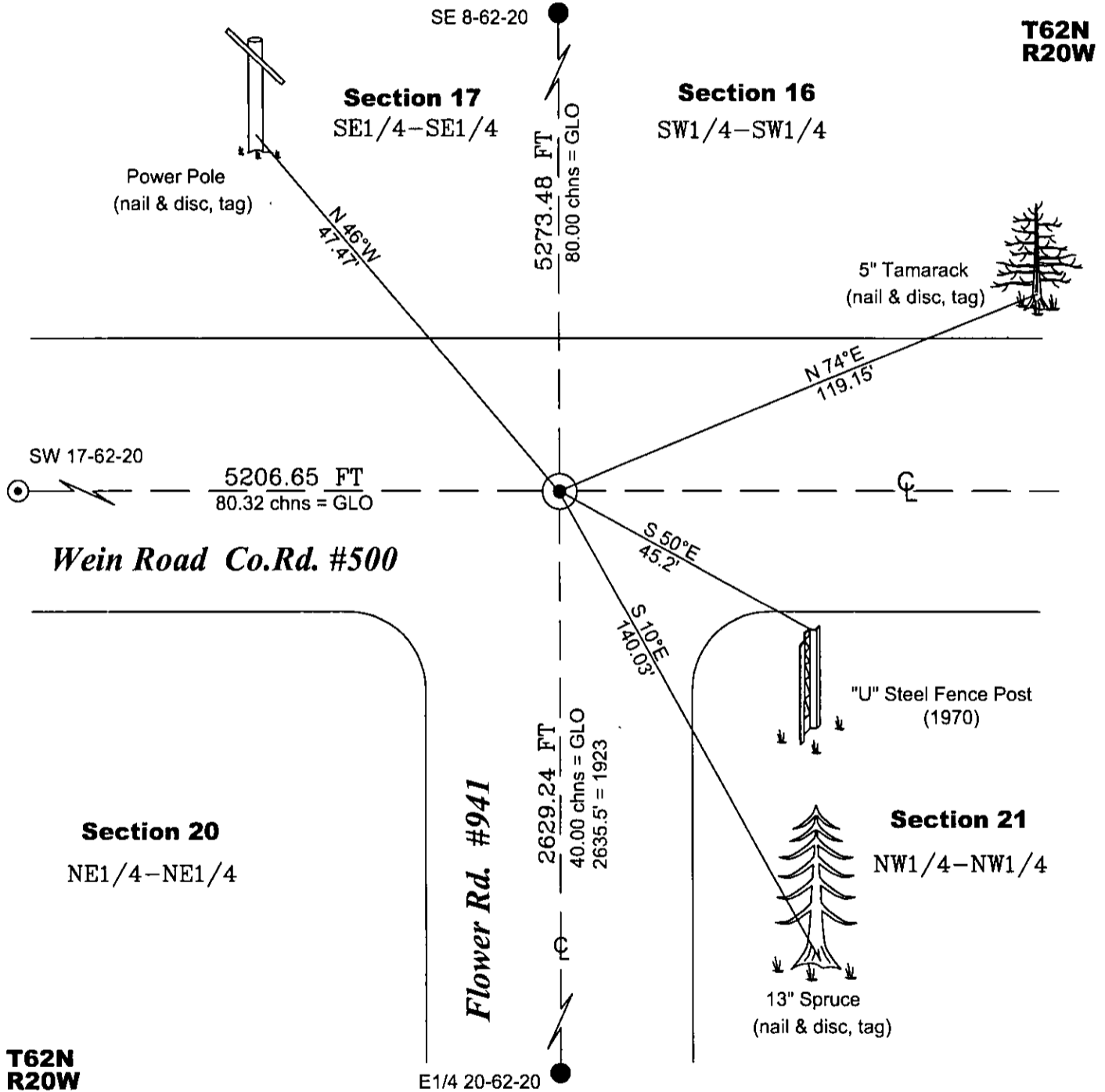
On April 14th 2014, found a(n) Aluminum Capped Pipe
1 foot below surface on centerline/centerline.

- left monument as found
- lowered monument
- removed monument (explain)
- raised monument

On _____, set a(n): _____

See "Statement of Evidence" for further details (on back)

GPS I.D.: Pt.# 30 Co. Proj. No.: 201304



drawn by Jake

"SKETCH OF REFERENCE TIES"

(not to scale - bearings are magnetic)



Ties are measured to center of monument unless otherwise noted.



NAD 83 (1996 adjustment)

Latitude (N): 47°50'54.20750"

Longitude (W): 92°54'45.88583"

SLCTM 96 Northing: 3730462.964 ft.

Easting: 4643576.046 ft.

I hereby certify that this survey, plan, or report was prepared by me or under my direct supervision and that I am a duly Licensed Land Surveyor under the laws of the state of Minnesota. I further certify that this certificate of location of government corner is correct and complete to the best of my knowledge and belief.

[Signature]
signature

Name: Preston Dowell

8-3-2017
date

License No. 44976

County Surveyor

Deputy County Surveyor

Professional Land Surveyor

Statement of Evidence**Southwest Corner Section 16, T62N, R20W****October 10th 1903**

The original survey of 62-20 subdivision was run north between Sections 20 and 21, and at 80.00 chains a 5" square tamarack post for the corner to Sections 16, 17, 20 & 21 from which:

7" Poplar	N 33°E – 291½ links
5" Poplar	S 82°15'E – 225 links
4" Poplar	S 67°30'W – 42 links
5" Spruce	N 85°10'W – 83 links

C.H. Armstrong, U.S. Deputy Surveyor

January 11th 1918

Alignment notes for the Wein Road show finding the original gov't post for the SW 16-62-20 2649.0' east of the S¼ 17-62-20 and 2645 west of the S¼ 16-62-20. From the found post a 7" Spruce at S 82°E – 158.9' was found and labeled "orig gov". The original BT was recorded as 5" poplar S 82¼°E – 225 links (148.5'). The following ties are listed:

5" Poplar	N 5°E – 161.10'
7" Spruce	S 82°E – 158.9' (orig. gov.)
7" Poplar	S 76°W – 210.30' (old ditch survey BT)
6" Poplar	N 17°W – 178.60'

Hibbing Road Notes H-CR-500
St. Louis County Surveyor's Office

March 7th 1921

WEIN ROAD - Consolidated and re-named by Resolution of County Board states: To be comprised of that part of the Wein Road described as beginning at....to the northeast corner of Section 24-62-19. Thence West on Section Line a distance of 15 miles to the southeast corner of Section 16-62-21....

November 24th 1923

Notes show ties for the corner to sections 16, 17, 20 & 21:

10" Spruce	S 52°E – 189.5'
14" Jack Pine	S 68°W – 249.6
6" Poplar	N 17°W – 178.6'
5" Poplar	N 05°E – 161.10'

A distance of 2635.5' south to the E1/4 Corner of Section 20 and a distance of 1317.5' can be calculated south to a 16th pipe shown on a sketch.

Note: These notes are contained in the Wein Road notes folder but appear to be for the Flower Road.

TW Dyer, Stanley Olds and PE Newman
Hibbing Road Notes H-CR-500
St. Louis County Surveyor's Office

March 7th 1921

WEIN ROAD - Consolidated and re-named by Resolution of County Board states: To be comprised of that part of the Wein Road described as beginning at....to the northeast corner of Section 24-62-19. Thence West on Section Line a distance of 15 miles to the southeast corner of Section 16-62-21....

October 26th 1970

Corner Card states: "Found new notes scribed BT. 14" Jack Pine at S 68°W – 249.6'. Set Alum. Cap to conform 4" below road surface." New ties are:

Steel Fence Post	S 50°E – 45ft
Steel Fence Post	S 40°W – 45ft

Alrich Bakk
St. Louis County Surveyor's Office

April 14th 2014

Found an aluminum capped pipe (ACP) 1 foot below road surface at centerline of the Wein Road (C.R.#500) and on a projection of the centerline of the Flower Road C.R.#941. Searched for all ties of record and found the following:

Steel Fence Post	S 50°E – 45.2ft
Steel Fence Post	S 40°W – 44.5ft (bent, buried and under water in ditch)

Set new references:

Power Pole	N 46°W – 47.47ft (nail,disc & tag)
13" Spruce	S 10°E – 140.03ft (nail,disc & tag)
5" Tamarack	N 74°E – 119.15ft (nail,disc & tag)

Located the ACP with VRS/GPS as project point #30.

Greg Jacobson and Bruce Anderson
St. Louis Co. Public Works Dept./ Land Survey Div.
Preston Dowell, Deputy Co. Surveyor